

w w w . s t a m p e d e . c o m



## TurboGold® Enterprise Edition

Installing TurboGold Server-to-Server  
on Microsoft Windows Servers

Data Movement

Data Storage

Data Control

**STAMPEDE**<sup>®</sup>  
TECHNOLOGIES, INC.

Stampede – software that moves<sup>®</sup>

---

## Using this document

This guide was prepared to assist you in the installation of TurboGold® Enterprise Edition software. It is designed expressly for Microsoft® Windows® 32 Lotus Domino™ servers. For other operating environments, please contact Stampede Technologies Technical Support.



When this document refers to Microsoft® Windows®, the following versions are supported with respect to the TurboGold component being discussed:

- *TurboGold verifiers/servers:*  
Microsoft Windows NT 4.0, Service Pack 3 and above  
Microsoft Windows 2000, Microsoft Windows 2003  
Microsoft Windows XP

## Document organization

The information in this manual is organized as follows:

### Chapter 1—Introduction

Provides system requirements and information needed prior to installing.

### Chapter 2—Installing TurboGold Verifier

Provides instructions on installing TurboGold.

### Chapter 3—What's next

What to do after installing.

### Index

# Contents

<b>1. Introduction</b> .....	<b>4</b>
System requirements for TurboGold Verifier .....	4
<b>2. Installing TurboGold Verifier</b> .....	<b>5</b>
Before you start .....	5
Firewall considerations.....	5
Anti-virus software .....	5
Installing TurboGold Verifier .....	6
Installing TurboGold Verifier in multiple Domino partitions .....	10
Installing in a hub/spoke environment.....	10
Installing on a server with multiple network interface cards (multiple IP addresses) ..	10
Setup verification .....	11
Starting the TurboGold Verifier .....	12
Uninstalling TurboGold Server-to-Server .....	12
Installing the Multicator.....	13
<b>3. What's next</b> .....	<b>14</b>
After installing.....	14
<b>Index</b> .....	<b>15</b>

# 1. Introduction

---

## System requirements for TurboGold Verifier

- ◆ Lotus Domino 4.5.1 and above \*
- ◆ Microsoft Windows NT 4.0 service pack 3 and above, 2000, 2003 or XP
- ◆ TCP/IP protocol
- ◆ 10 to 15 MB disk space
- ◆ 32 MB disk space for cache
- ◆ Runs as Microsoft Windows service or Lotus Domino add-in task
- ◆ Supports multiple Domino partitions



TurboGold AutoZip requires Domino 4.6.2 or above and Notes 4.6.2 or above

## 2. Installing TurboGold Verifier

---

### Before you start

Begin by reviewing the location of the Lotus Domino directory, the Notes.ini file and the Domino data directory on the Domino server where the TurboGold Verifier is to be installed. You will need to confirm these locations at installation time.

TurboGold creates a verifier database (tgoldver.nsf) the first time it loads, if it does not already exist. In a Server-to-Server environment, it is acceptable to maintain a unique database on the server where TurboGold is installed. In this environment, only the TurboGold Manager uses this database.

### Firewall considerations

When connecting to a TurboGold Verifier through a firewall, port 4916 for TCP/IP must be enabled. For additional information on and help on changing the default port, please contact Stampede Technical Support.

### Anti-virus software

If using Norton Antivirus, be sure Norton Antivirus is the first item in the server task list.

If GroupShield™ is implemented on a server-to-server basis, then TurboGold must be included in the GroupShield exclusion list.

GroupShield will regard TurboGold as a trusted source, because all files will be screened before TurboGold accelerates the data.

---

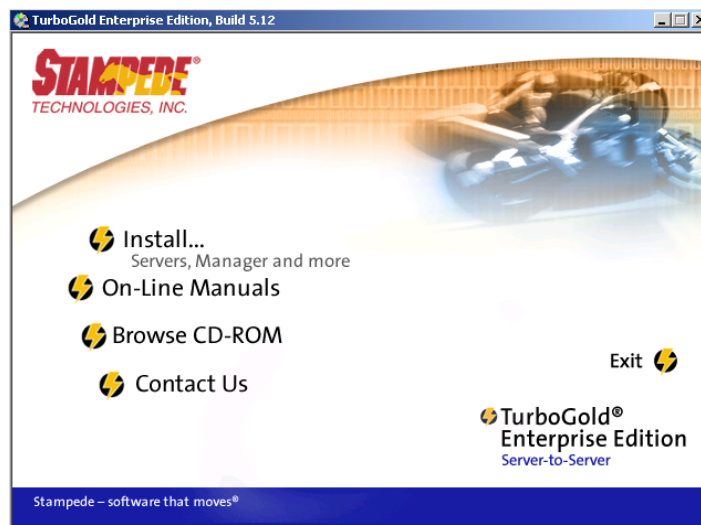
## Installing TurboGold Verifier

The TurboGold Verifier can be installed on any Microsoft Windows NT, Microsoft Windows 2000 or Microsoft Windows XP system containing a Domino Server copy of Notes. If TurboGold Verifier is installed on a Domino server, it will run as a Domino add-in task.

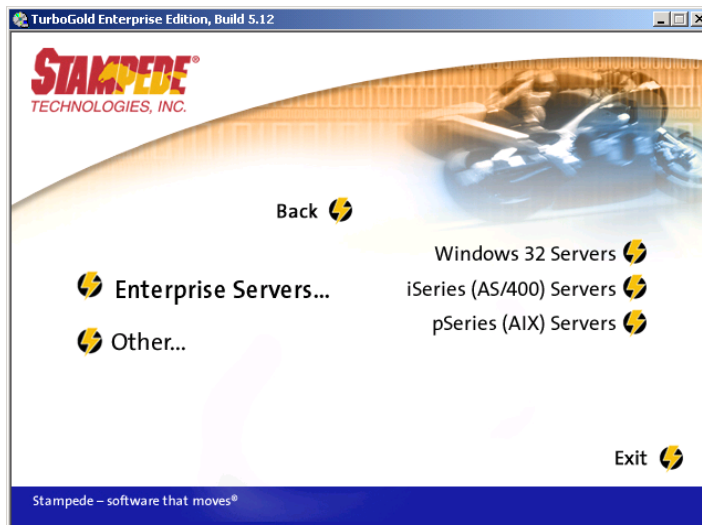


Prior to installing the TurboGold Verifier on a Domino server, the Domino server must be exited.

1. Insert the TurboGold Enterprise Edition Server-to-Server CD-ROM into your CD-ROM drive. The introductory screen will display automatically. Select **Install...**



- You will see two options for installing.  
Select **Enterprise Servers...**, then **Windows 32 Servers**.



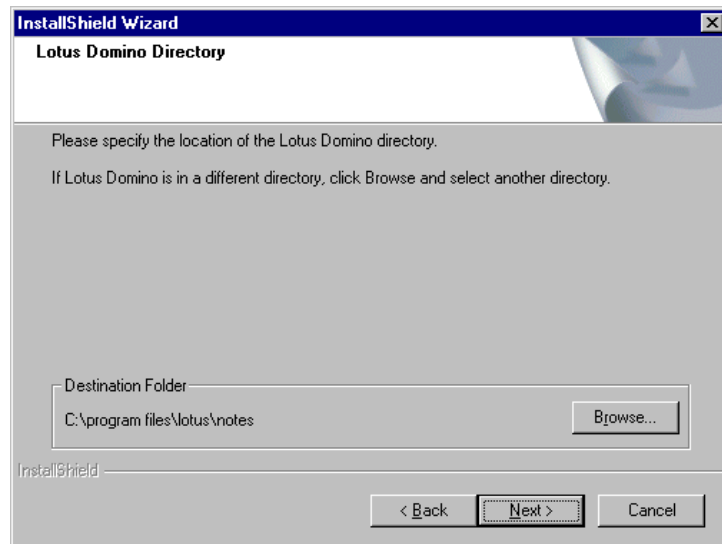
- The installation script will load, then you will see the Customer Information screen:

Enter your *user name*, *company name* and the *serial number* provided with the software. Click **Next** to proceed.

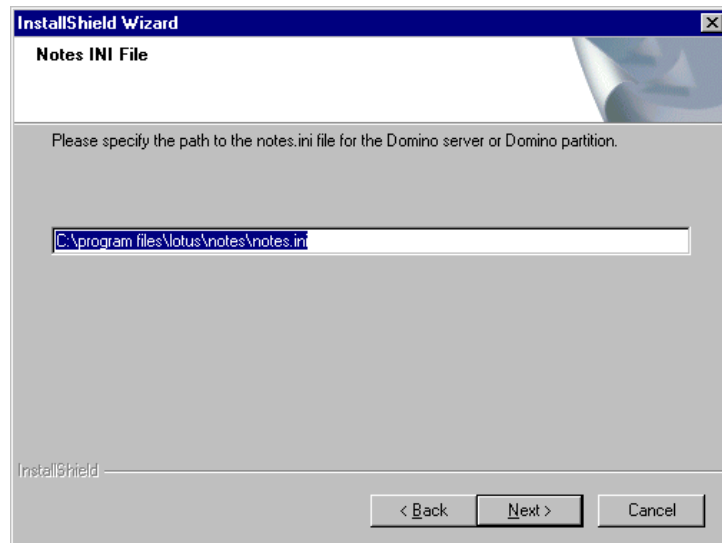


If TurboGold was previously installed, the original values for the name, company name, and serial number will appear in this screen.

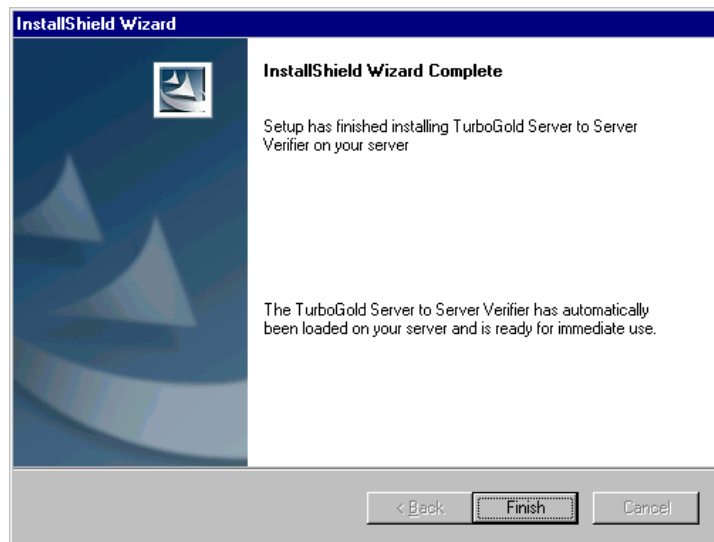
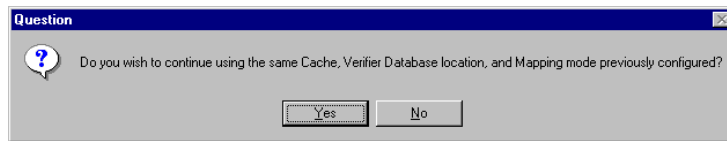
4. You will be requested to enter the location of the Lotus Domino directory.  
Use the default Notes directory or browse to select the correct directory. Click **Next** to proceed.



5. At this point, you will be prompted to enter the location and the name of the Notes.ini file.  
Accept the default name and location or browse to change the location and name of the Notes.ini file. Click **Next** to proceed.



6. If you have previously installed TurboGold on this Domino server, you will be asked if you wish to continue using the same cache, database location, and mapping mode. If you say yes, the existing locations will be retained. If you say no, the existing locations will be deleted and new ones created.
7. You will see the Completion screen. Select **Finish**. Setup will complete automatically and return to the Microsoft Windows desktop.



## Installing TurboGold Verifier in multiple Domino partitions

On a partitioned Lotus Notes server, TurboGold must be installed for each partition. Follow the steps as shown above in "[Installing TurboGold Verifier](#)" on page 6.

When you are prompted for the location of Notes.ini (step 5), specify the location of the Domino partition where TurboGold is being installed. The TurboGold cache directories are defaulted to the Domino data directory unless otherwise stated in an answer file.

When you are prompted for the cache and verifier database location directories, you can maintain the verifier database location uniquely in each partition or consolidate by naming the same location specified in the initial install.

Repeat steps 2 to 6 for each Domino partition.



The cache location should be unique for each partition.

## Installing in a hub/spoke environment

If using the TurboGold Manager, one important consideration for installing TurboGold in a hub/spoke environment is the location of the verifier database, `tgoldver.nsf`. Provided that the spokes have the ability to read this database and edit it on the hub server, the `tgoldver.nsf` database can reside on the hub.

In hub/spoke environment where the spoke does not have access to the hub server to receive data, the `tgoldver.nsf` database should be located on a spoke and then replicated to the other spokes and hubs that have TurboGold installed.

## Installing on a server with multiple network interface cards (multiple IP addresses)

In this instance, TurboGold will use the IP host name, rather than the IP address, to register a verifier name. If Server-to-Server is installed, and the verifiers do not communicate correctly with each other, check that the verifier is able to resolve the IP host name via DNS or Hosts file lookup.

---

## Setup verification

To test the server setup:

1. Replicate a Lotus Notes database between two Domino servers containing the TurboGold software.
2. For mail routing, send an email between two Domino servers containing the TurboGold software.
3. Review the `tgoldstat.nsf` on the Domino server to confirm TurboGold's compression and streaming savings achieved during the replication process and/or mail routing.

---

## Starting the TurboGold Verifier

Load the Domino Server and the TurboGold Verifier will start automatically if you chose this option in the installation process.

If not, start TurboGold by entering **load TurboGold** at the Domino console.

To stop TurboGold, enter the following command on the Domino console: **tell turbogold quit**

When loaded, TurboGold will automatically attempt to compress and stream replications and mail routing to/from other Domino servers that have a corresponding TurboGold Server-to-Server installed.

If the Replication Logging check box is enabled through the TurboGold Manager or `tgconfig.nsf`, TurboGold will display replication information to the Domino console. After a replication is invoked, TurboGold will indicate that it is working by displaying information similar to the following on the Domino Console screen. In this example, another Domino server invoked a remote pull:

```
02/05/2004 09:32:03 AM TurboGold:Remote Pull of TGSSTEST.NSF from CN=Test3/O=Company
```

Once the replication is complete, TurboGold will indicate that the replication completed, and display the number of documents updated and number of bytes saved as shown below:

```
02/05/2004 09:35:07 AM TurboGold: Successful Remote Pull of TGSSTEST.NSF to CN=Test3/O=Company; updated 2 document(s), Bytes Saved: 54816
```

---

## Uninstalling TurboGold Server-to-Server

1. Stop the TurboGold Verifier by issuing the command **tell turbogold quit** if it is running on a Domino console. If TurboGold is running as a service, select Services from Control Panel and stop the TurboGold Lotus Notes service.
2. Shut down the Domino server.
2. Open the Add/Remove programs option under Control Panel.
3. Select Stampede TurboGold Verifier(s) and choose Remove. If multiple servers are installed (partitioned server) you will be prompted for which one to uninstall.

---

## Installing the Multicator<sup>®</sup>

In order for the Multicator to function, the "nsf\_hooks=tghook" must be placed in the "notes.ini" of the Domino server where the verifier will trap the database updates. If this is not in there and "Multicator Acceleration" is turned on in the "Verifier Configuration" document of "tgconfig.nsf," the TurboGold verifier will not load.

## 3. What's next

---

### After installing

Once you have finished installing TurboGold Enterprise Edition on your Microsoft Windows server, you are ready to do one of the following:

- ◆ Set operating parameters (see the *Server Administration Guide for TurboGold Server-to-Server*)
- ◆ Install on other servers (see the installation guide for your server as listed below):
  - *Installing on iSeries-AS400 Servers*
  - *Installing on pSeries-AIX Servers*
- ◆ Create an answer file for deployment to other Microsoft Windows servers (see the *Server Administration Guide for TurboGold Server-to-Server*)
- ◆ Install TurboGold Manager (see *Manager Administration Guide*)

# Index

## A

- add-in task 4
- after installing 14
- AutoZip
  - Lotus Domino version 4

## C

- communication port 5
- company name 7
- Customer Information screen 7

## D

- default port 5
- disk space 4
- Domino partitions, multiple 10
- Domino, Lotus *See* Lotus Domino

## F

- files
  - notes.ini 5, 8
- firewall
  - communication port 5

## I

- installation procedure 6
  - options 7

## L

- Lotus Domino
  - directory 5
  - version 4
- Lotus Notes
  - directory 8

## M

- Microsoft Windows
  - version 4
- Multicator
  - installing 13
  - multiple Domino partitions 10

## N

- Norton Antivirus 5
- Notes, Lotus *See* Lotus Notes
- notes.ini file 8
- Notes.ini file 5

## P

- partitions, Lotus Domino 4
- partitions, multiple 10
- port, communication 5

## S

- serial number 7
- server
  - installation options 7
  - starting 12
- setup verification 11
- starting the server 12
- stopping TurboGold 12
- system requirements 4

## T

- TCP/IP 4
  - communication port 5

## U

- uninstalling 12
- user name 7

## V

- verifier
  - installing Multicator 13